

# Fact Sheet

## About us

The Allianz Group is one of the world's leading insurers and asset managers, active in almost 70 countries and serving around 97 million customers<sup>1</sup>. Allianz customers benefit from a broad range of personal and corporate insurance services, ranging from property, life and health insurance to assistance services to credit insurance and global business insurance. In fiscal 2025, over 156,000 employees achieved a total business volume of 186.9 billion euros and an operating profit of 17.4 billion euros for the group. Allianz SE, the parent company, is headquartered in Munich, Germany.

## Financial results

Total business volume Allianz Group 2025: EUR 186.9 bn

by segments<sup>2</sup>



by regions<sup>2</sup>



Operating profit Allianz Group 2025: EUR 17.4 bn

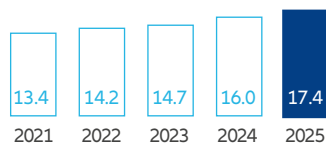
by segments<sup>2</sup>



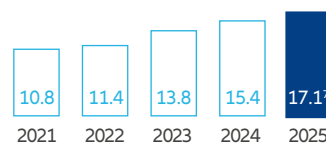
by regions<sup>2</sup>



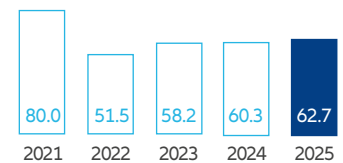
Operating profit<sup>6</sup>  
EUR bn



Dividend per share  
EUR



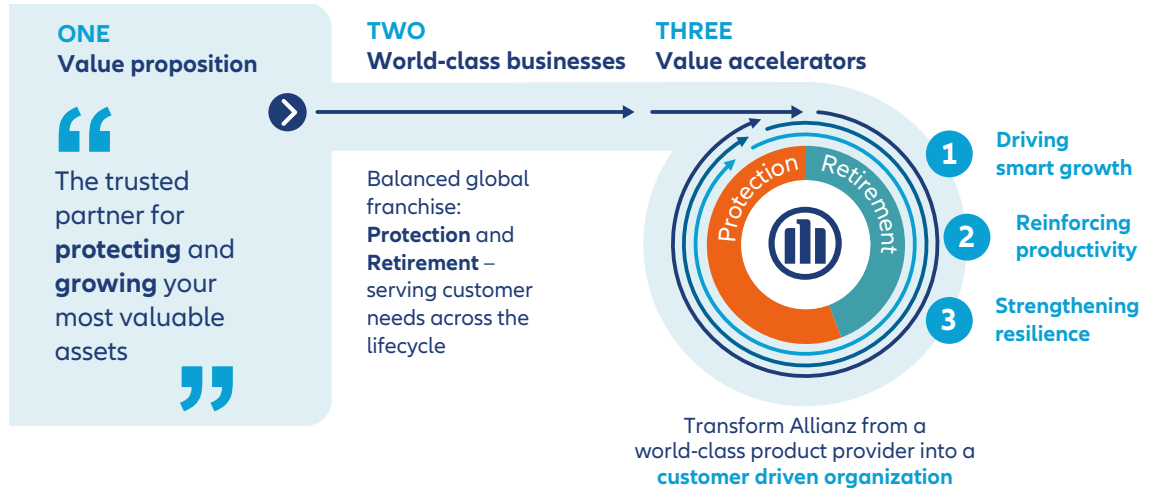
Shareholders' equity<sup>6,8</sup>  
EUR bn



Fiscal year = calendar year

- Customer count reflects Allianz customers in consolidated entities that are part of the customer reporting scope only.
- Excluding "Corporate & Other" and consolidation between segments.
- Central Europe, Asia Pacific, Latin America, Middle East, Africa and Türkiye. Austria and AZ Direct allocated to Western and Southern Europe.
- UK, Ireland, Australia.
- Allianz Global Corporate & Specialty, Allianz Trade, Allianz Partners, Allianz Re.
- Until 2022 IFRS 4, since 2023 IFRS 9/17.
- Proposal.
- Excluding non-controlling interests. In 1Q 2024 Allianz reclassified certain minority interests between equity and liabilities. Prior periods comparative figures for the balance sheet have been adjusted with a minor impact on shareholders' equity only (reduced by EUR 0.2 bn as of December 31, 2023 and December 31, 2022).

## Our strategy



## Our strengths

### Globally ...

- leading property-casualty insurer<sup>1</sup>
- among the top 5 in the life/health insurance business<sup>1</sup>
- one of the leading active global asset managers
- leader in credit insurance
- leader in assistance services
- one of the leading corporate insurers

Please note: The data provided is as of December 31, 2024. The information will be updated as soon as the reporting of the relevant peers' for fiscal year 2025 has been completed.

• Top Ratings:	Standard & Poor's <b>AA</b> Stable outlook	Moody's <b>Aa2</b> Stable outlook	A.M. Best <b>A+</b> Stable outlook
• Key figures:	Combined ratio 2025 <b>92.2%</b>	Solvency II capitalization 2025 <b>218%</b>	

## Our brands

### Top Brands

**Allianz**

**P I M C O**

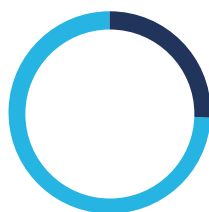
## Our share

WKN 840 400    ISIN DE 000 840 400 5

Shareholder structure as of 12/31/2025:

Number of shareholders: **978,408**    Number of shares: **380,418,897**

Market capitalization 12/31/2025: **EUR 148.6 bn**



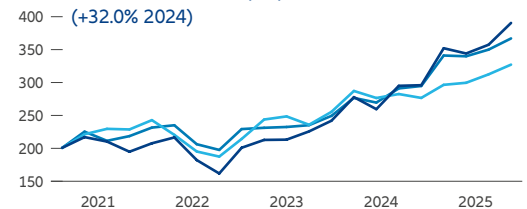
In % of issued capital:

- Private shareholders 26%
- Institutional shareholders 74%

Free float: 100%

### Share price performance

Allianz share as of 12/31/2025: **EUR 390.50**



- Allianz (Xetra)
- STOXX Europe 600 Insurance
- EURO STOXX 50

Indices in relation to the Allianz share price; Source: Bloomberg

<sup>1</sup> Based on currently available peer data. Allianz has defined a group of comparable peers with a similar business mix and global footprint, which includes AIG, AXA, Chubb, Generali and Zurich.

## Our employees

A total of **156,875** as of 12/31/2025



## Our management



**Oliver Bäte**  
CEO



**Sirma Boshnakova**  
Insurance Western & Southern Europe,  
Allianz Direct, Allianz Partners



**Claire-Marie Coste-Lepoutre**  
Finance, Risk, Actuarial, Legal,  
Compliance (CFO)



**Dr. Barbara Karuth-Zelle**  
Operations, IT and Organization (COO)



**Dr. Klaus-Peter Röhler**  
Insurance German Speaking  
Countries, Central Europe,  
Global P&C



**Dr. Günther Thallinger**  
Investment Management,  
Sustainability



**Christopher Townsend**  
Global Insurance Lines,  
Reinsurance, Anglo Markets,  
Iberia, Latin America, Africa



**Renate Wagner**  
Asia Pacific, Mergers & Acquisitions,  
People and Culture



**Dr. Andreas Wimmer**  
Asset Management, US Life Insurance



**Michael Diekmann**  
Chairman of the Supervisory Board

## Corporate history

---

Company foundation	02/05/1890 in Berlin
First traded	12/12/1895 on the Berlin Stock exchange
Member of the DAX	06/23/1988 as one of the founding members
Conversion to SE (Societas Europaea)	10/13/2006 as first DAX-Company

---

## Contact

### Allianz Investor Relations:

Allianz SE  
Koeniginstrasse 28  
80802 Munich

Tel.: +49 89 3800 7555

[investor.relations@allianz.com](mailto:investor.relations@allianz.com)

[www.allianz.com/investor-relations](http://www.allianz.com/investor-relations)